



Fantastic opportunity in this quiet building!

Bright top floor condo with a functional floor plan. Two Bedrooms & Two Full Bathrooms compliment the cozy living room with gas fireplace. Enjoy the morning sun from all rooms and outside on the East facing balcony. Modern entertaining & dining in the open concept kitchen with wrap around countertop for ample cooking space. Cherry hardwood & tile in the main rooms and soft carpet in the bedrooms. In-Suite Laundry, 2 Large closet organizers, 1 Secured parking spot, Separate storage, BBQ's & Pets allowed. This gloriously renovated condo has fresh new paint and tasteful decoration. Walking distance to Schools, Parks & all Shopping amenities.

"Move-In-Ready" for Purchasers Ease!



407-3160 *Albina*





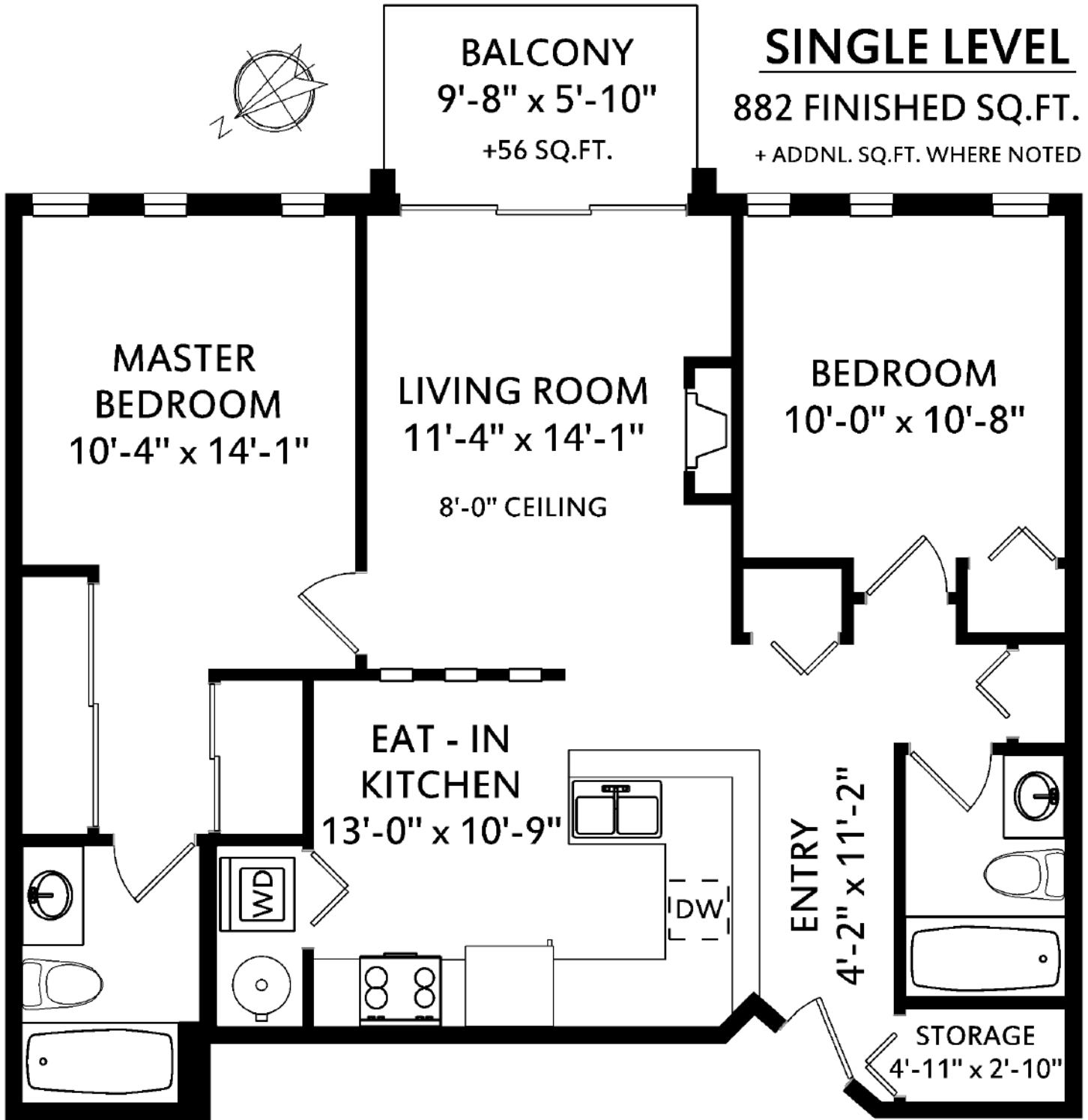
Coldwell Banker Slegg Realty

# Robin Cushing

REALTOR® Presents



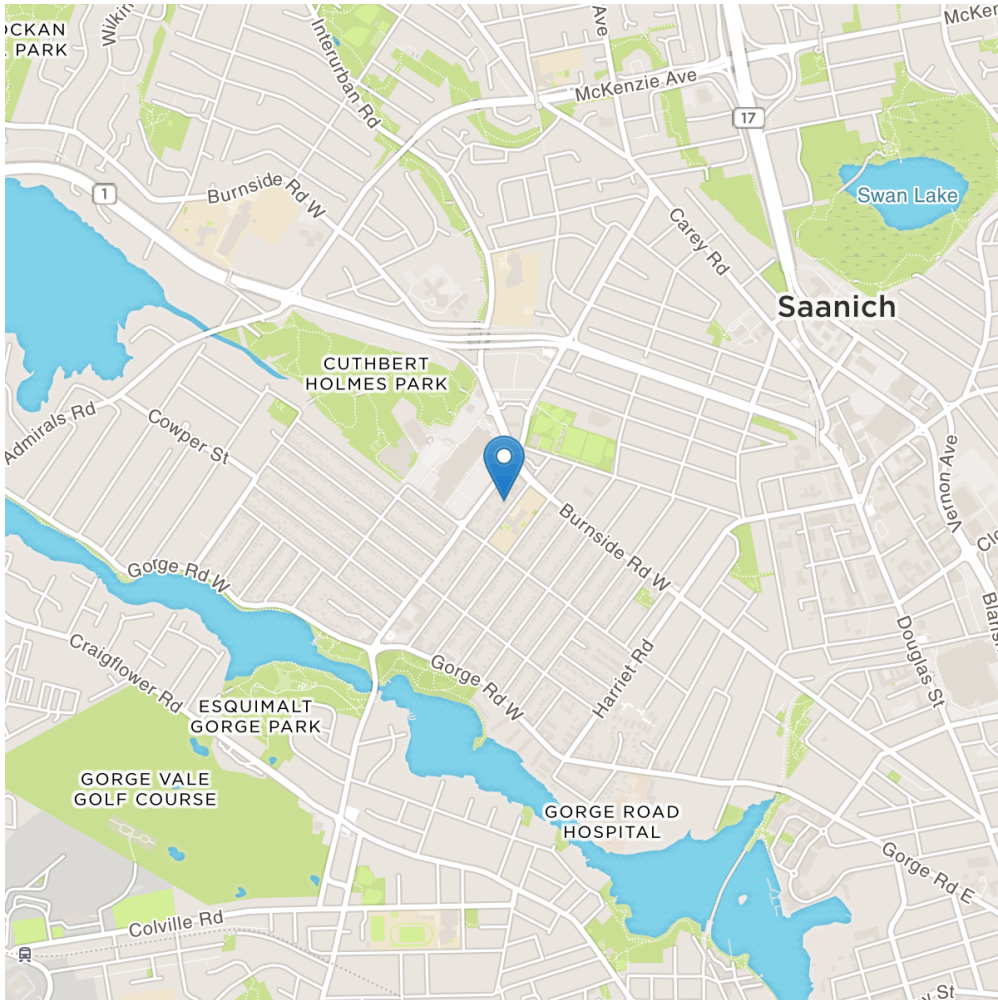
# Floor Plans



Prepared for the exclusive use of Robin Cushing. Figures, Calculations & Representations are for indicative and promotional purpose only. All information regarding this property is from sources deemed reliable but no warranty or representation is made to the accuracy thereof. Plans may not be 100% accurate, if critical Buyer to verify.



Enjoy the peace & quiet in this nicely updated top floor suite. A Condo which will provide lasting value, style and exceptional quality of life!



### Neighbourhood Highlights

Steps from Tillicum Elementry, and just around the corner from the Mall & All Major Amenities.

~

Minutes to Gorge Waterway, Kinsmen, Colquitz & Hampton Parks

~

Only 10 Minutes to Downtown Victoria

